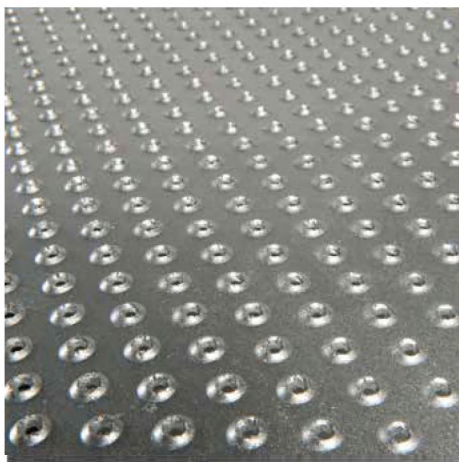
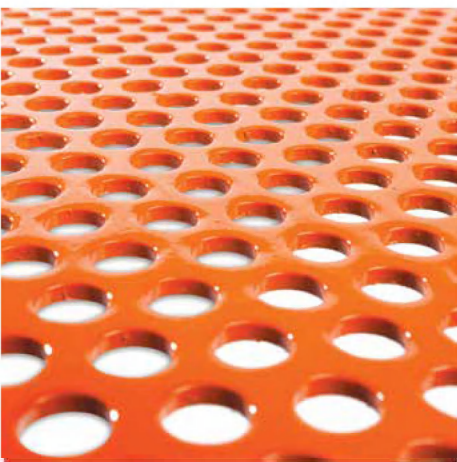
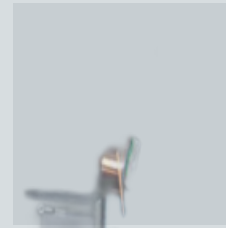
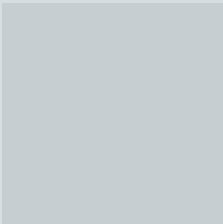


 **ENSKAB**  انسكاب  
**ENSKAB**  
**GRATING**  
PRODUCTS & SERVICES GUIDE





Enskab, a member of a Saudi business family who has successfully managed the family business establishment for the last decade and developed in the line to meet the growing requirements of the nation.



Enskab is an establishment which is actively involved in the trading, contracting, manufacturing and human resource development & supply sectors in The Kingdom of Saudi Arabia for the last few years.

Our organization consist of various specialized groups of dedicated, capable and well-trained professionals, technicians and workers who are well co-ordinate and organized to provide the best service and to achieve the highest quality control for the absolute satisfaction of our customers.

Enskab Grating's range of premium products are the basis of our best-in-class services. From stylish architectural pieces to demanding, functional components, Enskab Grating offers a wide range of customizable products designed to meet your project needs.

We provide customers with quality products that provide continuing value, safety, and durability. Please explore the following pages and consider which products suit your application. We are ready to assist in your selection and deliver excellence to your project on the most demanding schedule.

## Contact Info



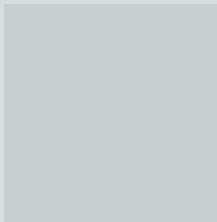
### Our Location

Road 4130 Building 1287  
Flat 11,  
Riffa Al Buhair, Kingdom Of  
Bahrain



### Our Email

[info@enskab.com](mailto:info@enskab.com)



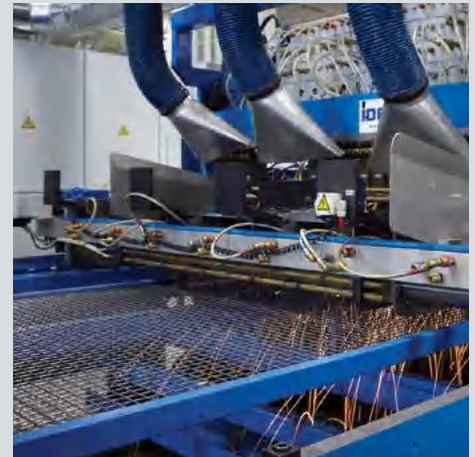
### Call Us

+973 39953806



### Working Hours

Sat-Sun: 8AM-5PM

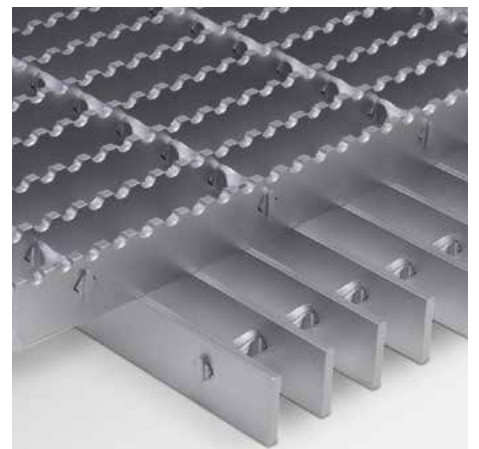
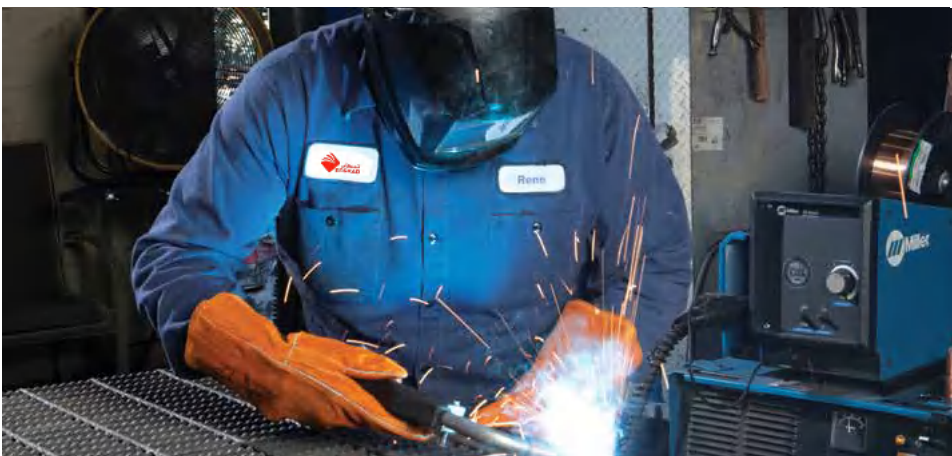


# CONTENTS

<b>1</b>	<b>METAL BAR GRATING</b>	<b>4</b>
<b>2</b>	<b>CODA ARCHITECTURAL</b>	<b>7</b>
<b>3</b>	<b>SAFETY GRATING</b>	<b>9</b>
<b>4</b>	<b>FIBERGLASS GRATING</b>	<b>11</b>
<b>5</b>	<b>PERFORATED METAL</b>	<b>13</b>
<b>6</b>	<b>EXPANDED METAL</b>	<b>15</b>
<b>7</b>	<b>STAIR NOSINGS</b>	<b>17</b>
<b>8</b>	<b>SLIP-RESISTANT FLOORING</b>	<b>19</b>
<b>9</b>	<b>DOCK SOLUTIONS</b>	<b>21</b>
<b>10</b>	<b>HANDRAIL</b>	<b>23</b>
<b>11</b>	<b>LADDER</b>	<b>24</b>



# METAL BAR GRATING



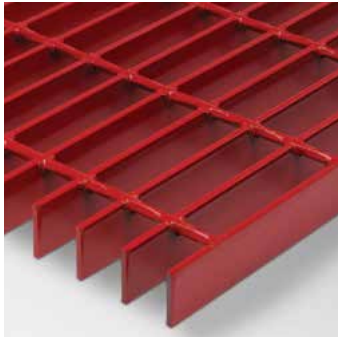
## METAL BAR GRATING

Metal bar grating is the workhorse of the industrial flooring market. Features that make bar grating the preferred choice for open metal flooring include:

- Manufactured in steel, aluminum, or stainless steel
- High strength-to-weight ratio
- High percentage of open area
- Easily fabricated to any configuration
- Essentially maintenance-free



### Metal Bar Grating Products



Steel



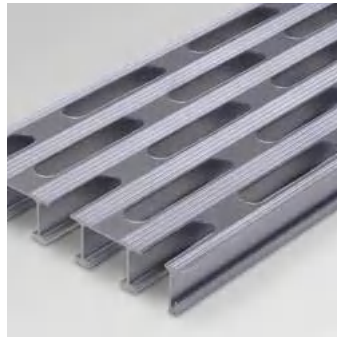
Aluminum



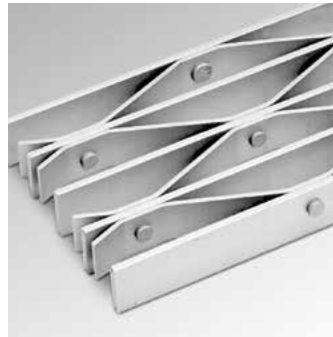
Stainless Steel



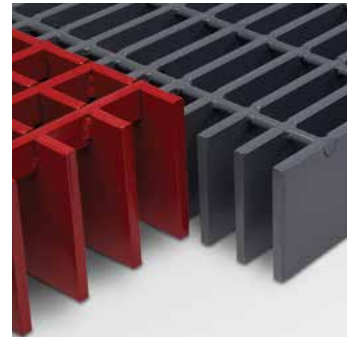
Stair Treads



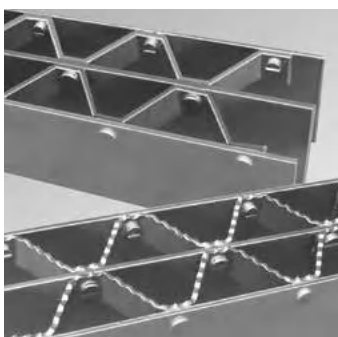
Aluminum Plank Grating



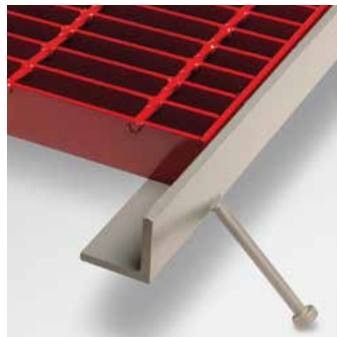
Riveted



Heavy Duty



Bridge Decking



Embed Frames



Trench & Inlet Systems



Architectural Products

## BAR GRATING FABRICATION

### Engineering

Enskab Grating offers complete engineering services from concept to production. Available services include:

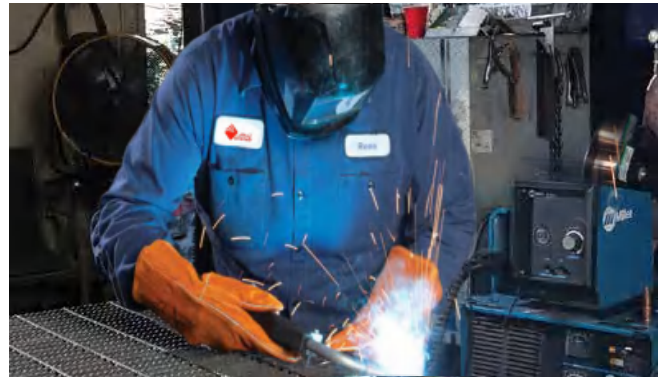
- Design consultation
- Technical manuals
- Field technical representatives
- CAD drafting
- Engineering certification
- Custom design services



### Customization

Our fully trained production staff will transform stock panels into custom components to your exact specification. We will layout and cut our products to any configuration. We also fabricate stair treads, frames, and install lifting devices on products as needed. Shop fabrication eliminates the need for costly field labor and scrap disposal at the project site.

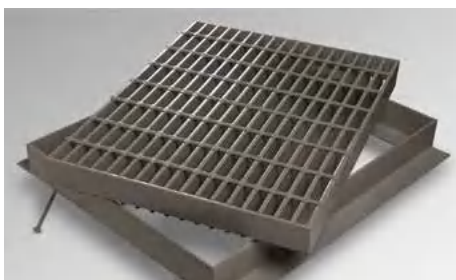
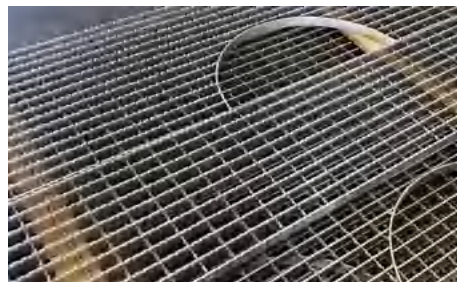
Post-fabrication, all materials can be properly finished to assure maximum life. Additionally, all panels are piece marked to matching installation drawings which accompany product shipment. Our fabrication services are accurate, prompt, and lead to straightforward installation.



### Fabrication Services

We proudly offer in-house fabrication of metal bar grating including:

- Sawing
- Flame and plasma cutting
- Welding
- Punching
- Banding
- Finishing





# CODA ARCHITECTURAL PRODUCTS



## CODA Architectural Products



Opus



Aria



Opus50



Opus60 fencing infill with Aria 80LG sunshade (above)



Opus10 Stair Infill Panels

## Architectural Grating Products



Architectural Bar Grating



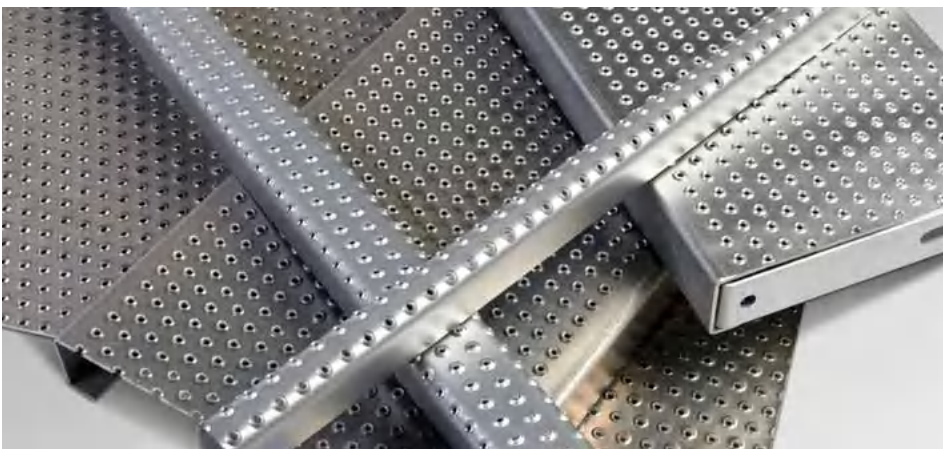
Louver Grates







# SAFETY GRATING



## SAFETY GRATING

Safety Grating is manufactured by cold stamping and forming carbon steel, aluminum, or stainless steel sheet into a one piece, modular plank, or flat sheet, with distinct walking surfaces. Benefits of safety grating include:

- Lightweight material
- Economical
- Easy to fabricate
- Slip-resistant surfaces
- Extremely low maintenance

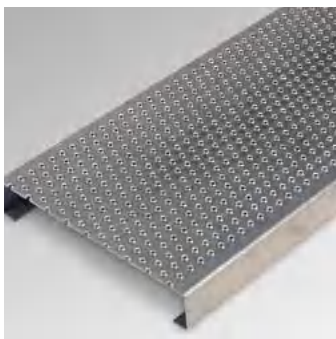
### Safety Grating Products



Grip Strut®



Perf-O Grip®



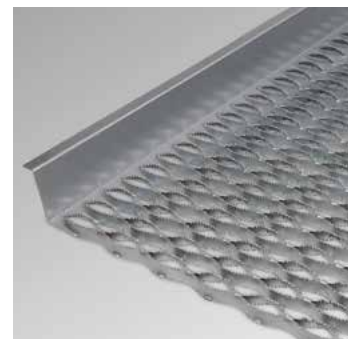
Traction Tread™



Grate-Lock™ Interlocking



Heavy Duty Grip Strut®



Safety Grating Walkway Channels



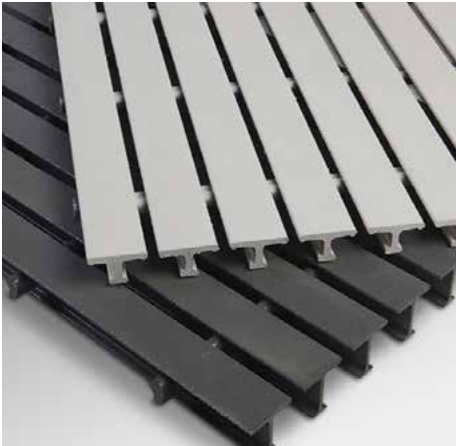
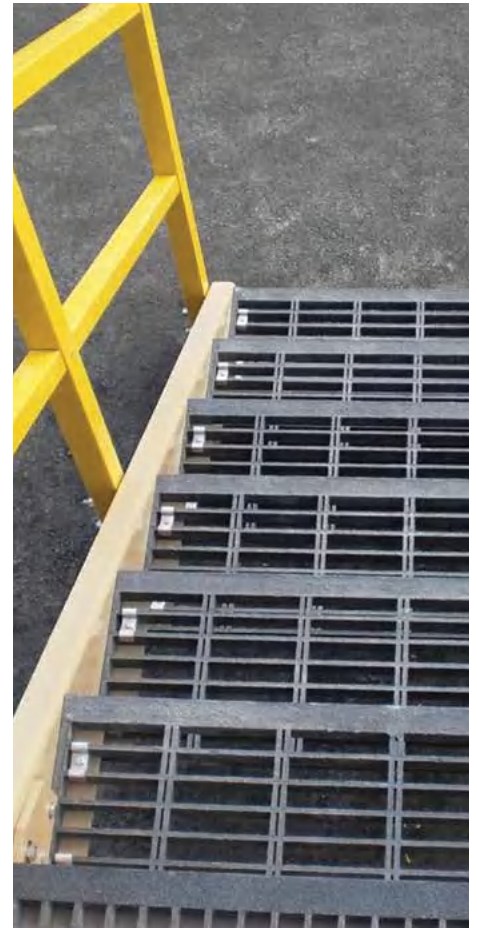
Safety Grating Stair Treads



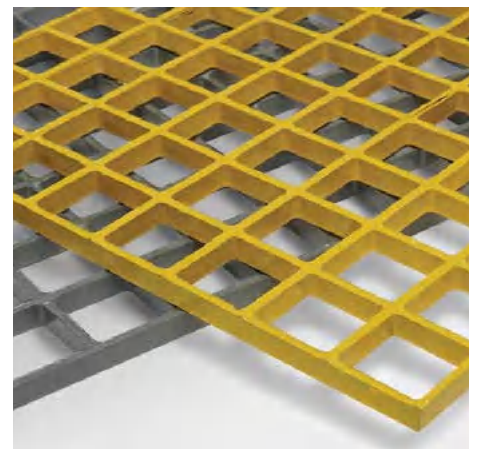
Safety Grating Ladder Rungs



Floor Resurfacing Products



# FIBERGLASS GRATING



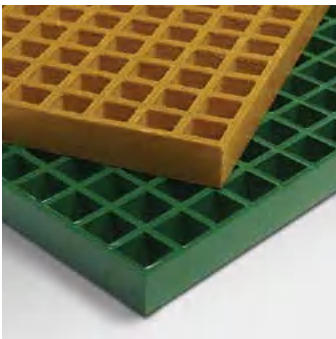
## FIBERGLASS GRATING

Available in a wide range of high-performance resins, fiberglass gratings and structural components are preferred for demanding applications including chemical processing, marine environments, pulp and paper plants, food and beverage processing, and wastewater facilities. Features that make fiberglass a preferred option include:

- Excellent corrosion resistance
- Fire retardant
- Lightweight & easily fabricated
- Low maintenance
- Long service life



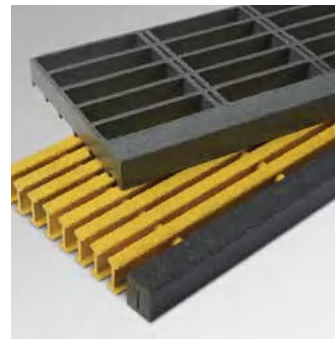
## Fiberglass Grating Products



**Molded  
Fiberglass Grating**



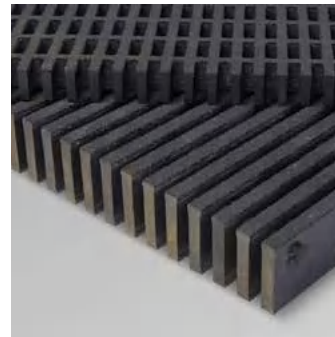
**Safe-T-Span® Pultruded  
Fiberglass Grating**



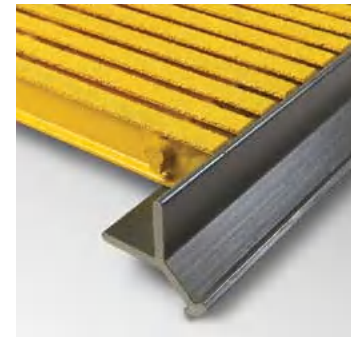
**Fiberglass  
Stair Treads**



**Fiberplate Stair  
Tread Covers**



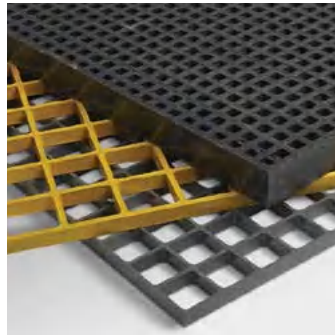
**High Load Capacity  
Fiberglass Grating**



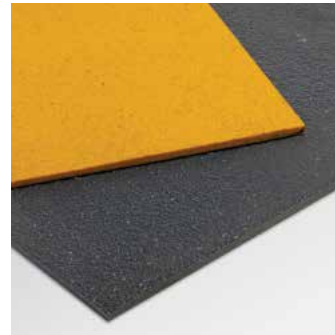
**Fiberglass Grating  
Embed Angle**



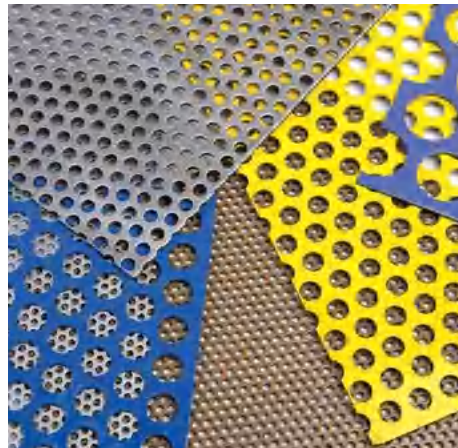
**Dynaform® FRP Structural  
Shapes & Fabrication**



**Molded Fiberglass  
Patterns & Screens**



**FRP Floor Plate**



# PERFORATED METAL

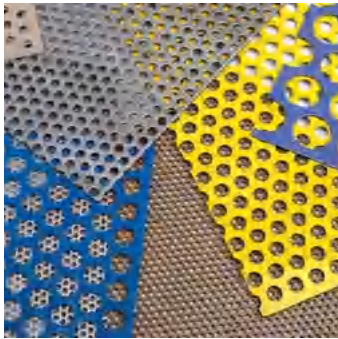


## PERFORATED METAL

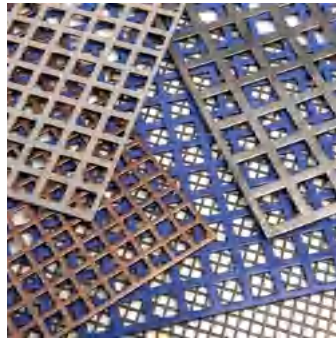
Perforated metal is manufactured by mechanically stamping or punching sheets of steel, aluminum, stainless steel, or specialty alloys to create patterns of round or square holes, slots, and other ornamental shapes. Popular for its functional and aesthetic appeal, common applications of perforated metal include:

- Industrial filtration
- Screens & sorting
- Architectural accents
- Ventilation covers
- Machine guards
- Signage backdrop

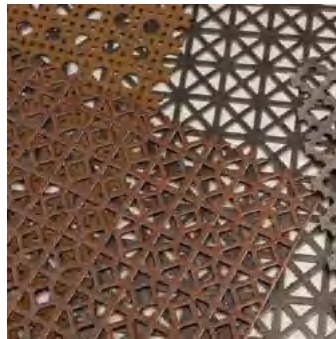
### Products



Round Hole



Square Hole



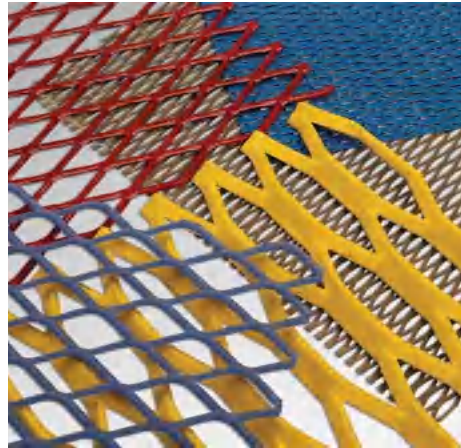
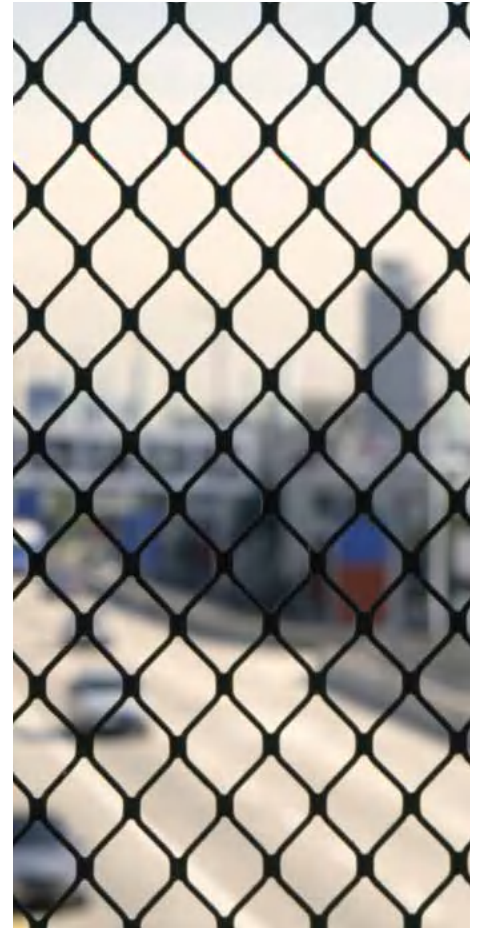
Slotted and Ornamental



Custom and Specialty



Custom Fabrication & Finishes

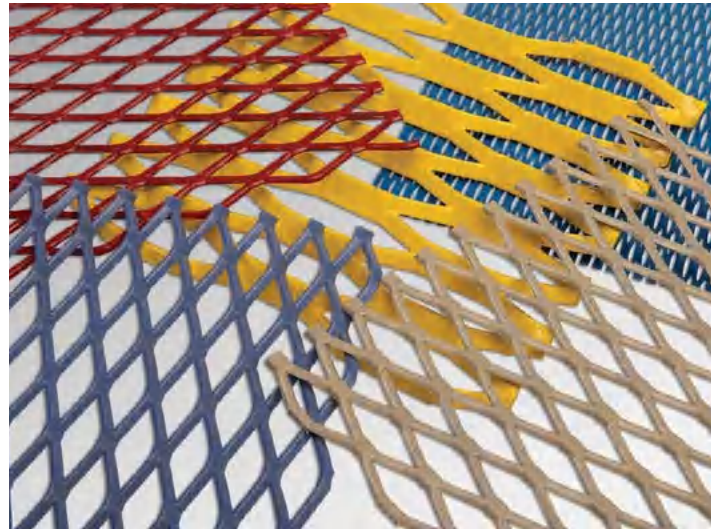
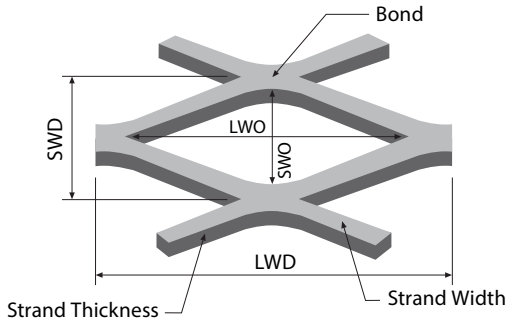


# EXPANDED METAL

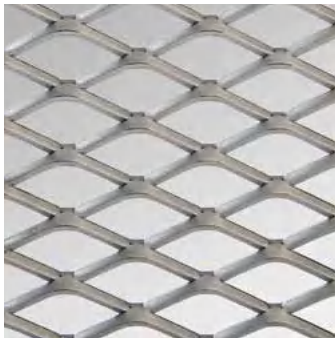


## EXPANDED METAL

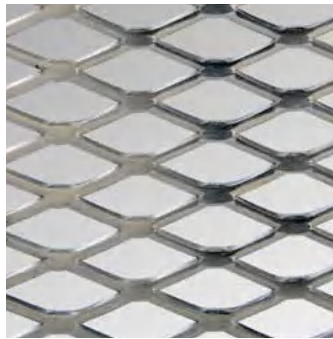
Manufactured by slitting and stretching metal sheets into an open diamond pattern, expanded metal is strong, rigid, and lightweight. Available in carbon steel, aluminum, or stainless steel, light duty expanded metal is available with a standard, slightly raised surface, or a flattened, smooth finish. Heavy gauge expanded metal grating is designed to serve pedestrian loads.



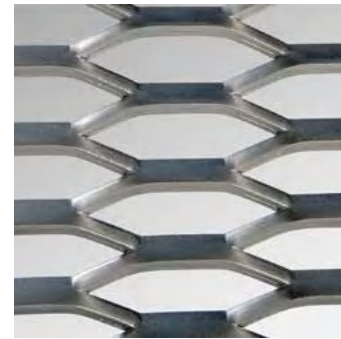
## Expanded Metal Products



Standard (Raised)



Flattened



Expanded Metal Grating

## Expanded Metal Terminology

**DIAMOND:** The open area formed by strands and bonds.

**STRAND:** The single metal strip that forms the perimeter of the diamond.

**BOND:** The point where adjacent strands meet.

**LWD:** Long way of the diamond, the distance from the center of one bond to the center of the next bond across the longer opening of the diamond.

**SWD:** Short way of the diamond, the center-to-center distance between bonds across the narrow opening of the diamond.

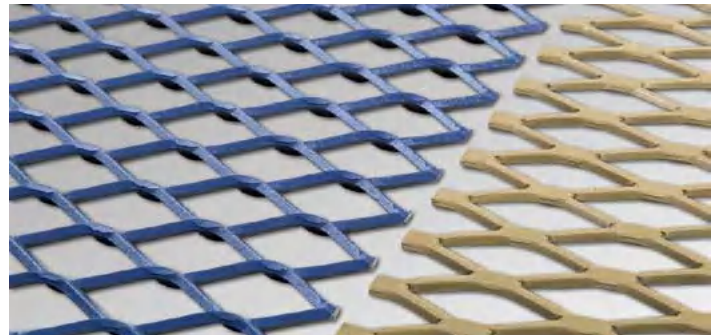
**LWO:** Long way of the opening, the clear opening of the diamond in the long direction of the diamond.

**SWO:** Short way of the opening, the clear opening of the diamond across the short direction of the diamond.

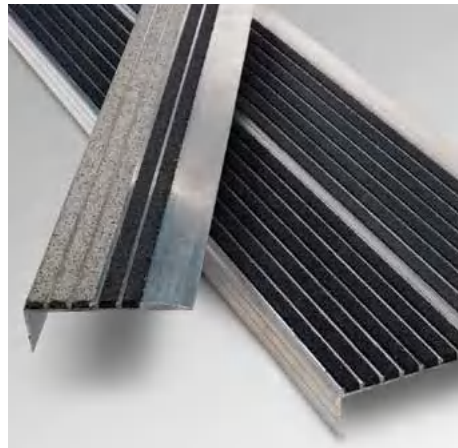
## Regular vs. Flattened Expanded Metal

Standard expanded metal, also known as “raised” or “regular” expanded metal is raised at the bonds of the diamond. The resulting sheet has a surface that is rough to the touch and is also more rigid. Ideal for industrial applications where public contact is limited.

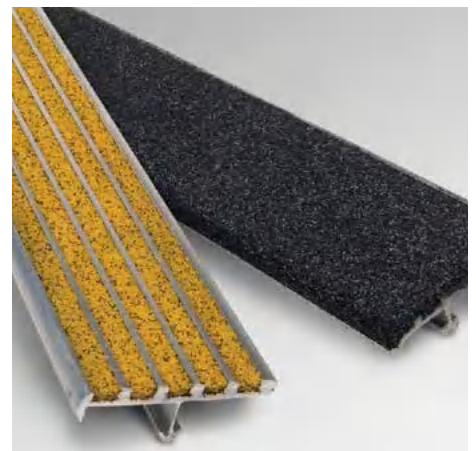
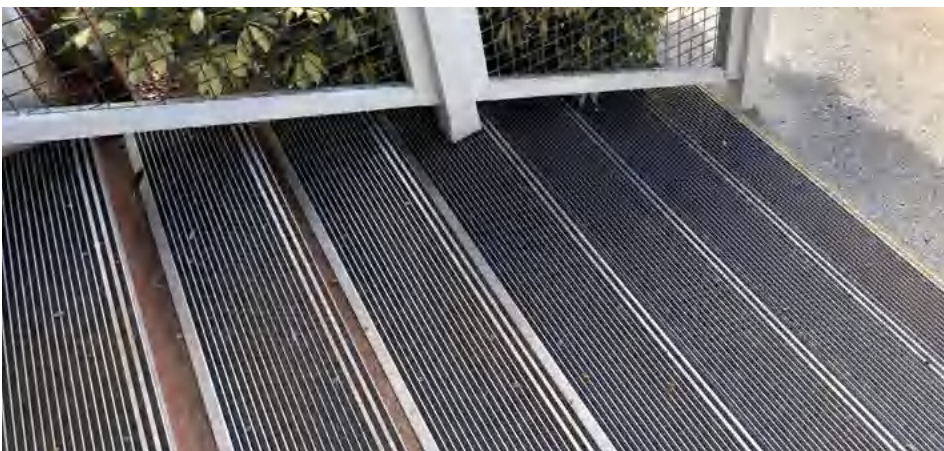
Flattened expanded metal has been passed through rollers and is smooth across each bond. Ideal for screening applications.







# STAIR NOSINGS & COVERS



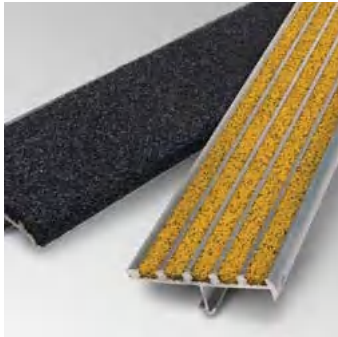
## STAIR NOSINGS & COVERS

Safety, durability, and impact resistance are just some of the features that make Enskab Grating SuperTread Nosings and Tread Covers preferred components for stairs and landings. SuperTread products are available in extruded aluminum carriers with a solid abrasive fill; cast iron, cast aluminum, or cast bronze abrasive.

Maximum pedestrian safety is provided by the anti-slip walking surface and OSHA conforming, barrier-free installation. SuperTread Nosings form a highly visible, defined, leading edge at the primary point of contact on stairs and landings. Impact-resistant nosings protect concrete edges that are prone to chipping and cracking.



### Types of SuperTread Stair Nosings & Covers



**Extruded Aluminum Stair Nosings**



**Cast Abrasive Stair Nosings**



**Extruded Aluminum Stair Covers**

## SUPERTREAD ALUMINUM STAIR NOSINGS

SuperTread Extruded Aluminum Nosings are manufactured with a base container of 6061-T5 extruded aluminum filled with an abrasive mixture of aluminum oxide and silicon blend, compacted and bonded by 100% solid epoxy. Extruded nosings are designed for installation during a new concrete pour and are available in lengths up to 24'. Stock colors are black or yellow, with a wide range of optional colors available on special order. Two inch wide safety strips are available





# ONGRIP & ALGRIP SLIP-RESISTANT FLOORING



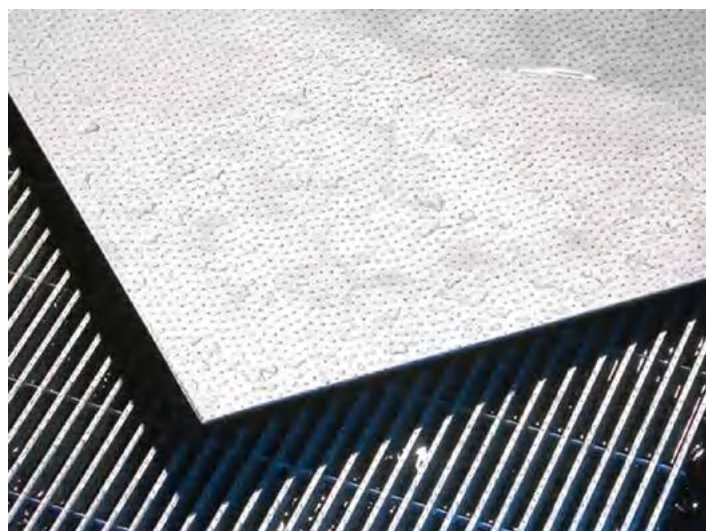
## ONGRIP® SLIP-RESISTANT FLOORING

Slip-resistant floor plates and grating are created by applying OnGrip spray traction surface to stainless steel, carbon steel, and aluminum plate or grating. OnGrip flooring is commonly used in both commercial and industrial applications where surfaces are routinely exposed to fluids and lubricants. OnGrip slip-resistant flooring provides enhanced safety and traction in areas that frequently experience high levels of pedestrian traffic.



## ALGRIP SLIP-RESISTANT FLOORING

Algrip traction surfaces are available on both grating and floor plate options. This versatility allows for a variety of applications in commercial settings and pedestrian areas. A patented process welds metal deposits to stainless steel, carbon steel, and aluminum floor plates and grating, creating increased traction in all directions. Algrip grating and floor plate products are ADA compliant and are commonly used in applications that are subject to the accumulation of moisture.



### Fabrication

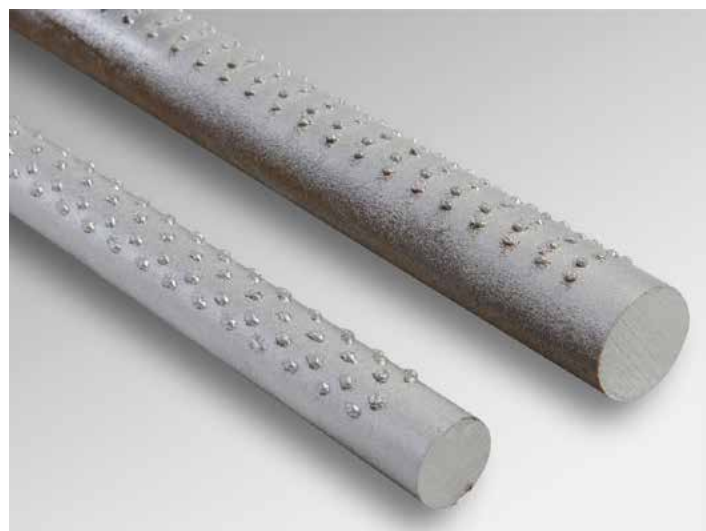
OnGrip and Algrip are easily fabricated by:

- Punching & Drilling
- Welding
- Forming
- Countersink
- Shearing
- Flame Cutting

## ALGRIP SLIP-RESISTANT LADDER RUNGS

Algrip Slip Resistant Ladder rungs provide an extremely durable surface designed to provide safer ascent and descent for workers. Algrip Ladder Rungs meet OSHA requirements for fixed metal ladders of all types.

- Available in 3/4" or 1" diameter
- Materials: Carbon Steel, Stainless Steel, Aluminum





# DOCK & DECK SOLUTIONS

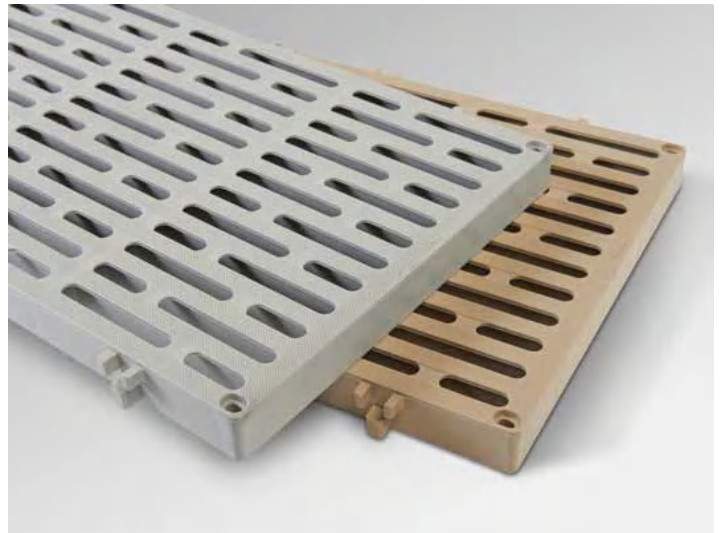


## THRU-FLOW™

ThruFlow™ is an interlocking molded polypropylene grate manufactured in stock sizes. Ideal for boat docks and ramps. The grates are light-weight, long-lasting, maintenance free, and simple to install. The walking surface is ADA compliant, slip-resistant, and cool under bare feet. Legacy XP and Legacy products in stock, other ThruFlow products available upon special order.

Features:

- LegacyXP available in 1'x3', 1'x4', and 1'x5'
- Legacy panels available in 1'x3', 1'x4', 1'x5', and 4'x4'
- 43% open area
- Color options include light grey, and maple



## SUNWALK™

Sunwalk Decking and Dock solutions feature the Sunwalk 90 Series and Sunwalk 45 Series interlocking, polypropylene grates. With clean lines, and uniform design, Sunwalk products are easy to install, durable, and storm resistant. All products feature an ADA compliant, slip-resistant walking surface that stays cool to the touch as the weather warms up. Sunwalk 90 Series features a slotted, linear pattern, Sunwalk 45 Series features a diagonal slotted pattern.

Features:

- Sunwalk 90 Series available in 1'x3', 1'x4', 2'x4', and 1'x5'
- Sunwalk 45 Series available in 3'x4', 4'x4', and 4'x5'
- 45% open area
- Color options include oak and stone



## ECOGRATE® 62

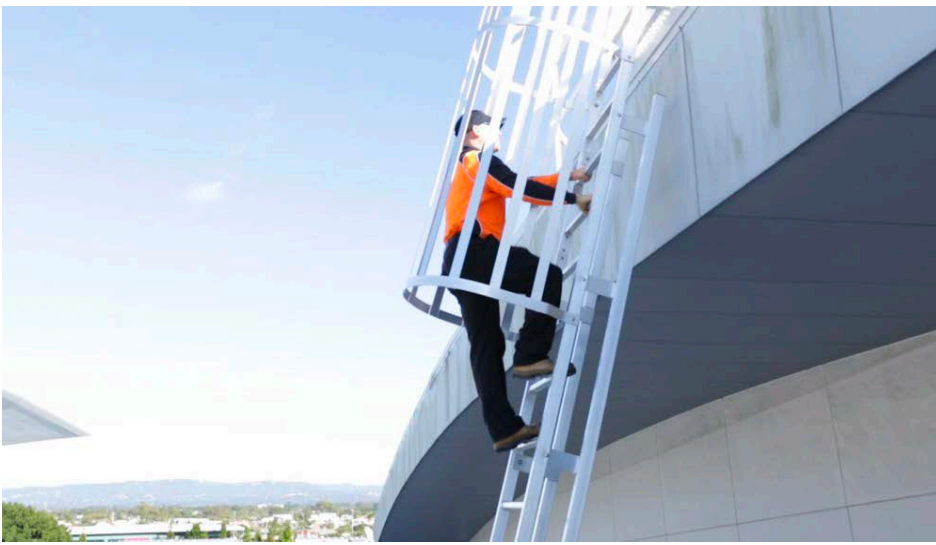
ADA compliant Ecograte 62 is designed to meet requirements for marine decking and docks. Ecograte has a 62% open area and is available with coarse or fine grit surface options.





# HANDRAIL





# LADDER

